

## Durnsford Road Wimbledon, SW19 8HQ

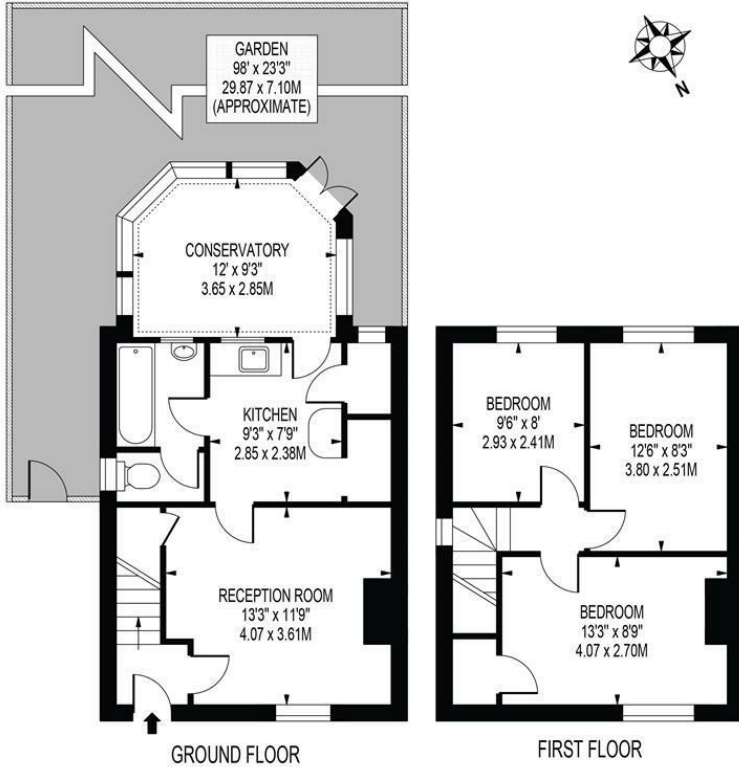
**£525,000 Freehold**



**A three bedroom semi-detached freehold house in need of modernisation throughout with three bedrooms, family bathroom, lounge and kitchen/breakfast room offered for sale within close proximity of Wimbledon town. Benefitting from off street parking and boasting a rear garden of over 90ft in length the property presents the perfect opportunity for an individual to create their ideal home. Sold with no onward chain early viewings are highly recommended.**

## DURNSFORD ROAD

APPROXIMATE GROSS INTERNAL FLOOR AREA: 811 SQ FT - 75.38 SQ M

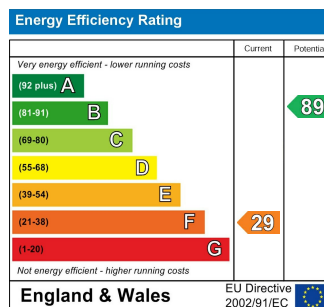


FOR ILLUSTRATION PURPOSES ONLY

THIS FLOOR PLAN SHOULD BE USED AS A GENERAL OUTLINE FOR GUIDANCE ONLY AND DOES NOT CONSTITUTE IN WHOLE OR IN PART AN OFFER OR CONTRACT. ANY INTENDING PURCHASER OR LESSEE SHOULD SATISFY THEMSELVES BY INSPECTION, SEARCHES, ENQUIRIES AND FULL SURVEY AS TO THE CORRECTNESS OF EACH STATEMENT. ANY AREAS, MEASUREMENTS OR DISTANCES QUOTED ARE APPROXIMATE AND SHOULD NOT BE USED TO VALUE A PROPERTY OR BE THE BASIS OF ANY SALE OR LET.



- Semi Detached House
- No Onward Chain
- Requires Refurbishment
- Excellent Extension Potential (STPP)
- Three Bedrooms
- Rear Garden - 98ft in length
- Off Street Parking
- Freehold
- Current EPC Rating - F
- Council Tax Band - D



For Free Mortgage Quote and Best Mortgage Rates, call an Ellisons Mortgage Advisor on 020 8944 9494



Although these particulars are believed to be correct, their accuracy is not guaranteed and they do not form part of any contract.

Celebrating 30 years of successful Sales and Lettings in Merton

